



A0115326 - 60' 2005 TEREX XM-55; 2006 INTERNATIONAL 4300 4X2
Warehouse: RNT - UNIT ON RENTAL

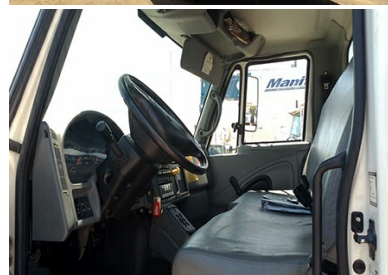
CHASSIS SPECIFICATIONS

VIN: 1HTMMAAN36H335546
Engine Make / HP: INTL DT466 / 245
Transmission: ALLISON 3000RDS 5-SPEED A
Brakes: AIR
Hitch: PINTLE HOOK
Winch Location: **Capacity:**
Drive Type: NON-AWD **Fuel Type:** DIESEL **Rail Gear:** N
Rail Gear Type:
*** NOT C.A.R.B COMPLIANT ***



EQUIPMENT SPECIFICATIONS

Serial Number: 2051128880
Working Height: 60' **Capacity:** 350 EA
Bucket: 24X30X42 2 1MAN
Certified Kv: 46KV CAT C
Rotation: CONTINUOUS
Outrigger(s): (2) SETS X FRAME
Mount: OVER REAR AXLE
Tool Circuit: HYD AT PLATFORM
Controls: SINGLE STICK
Body: UTILITY LINE
Winch/Jib: HYD EXT JIB WINCH **Capacity:** 2,000LBS
Additional:
Over Center: N **Telescoping:** N **Upper Controls:** Y
Rotator: Y **Material Handler:** Y **Insulated Boom:** Y



DIMENSIONS / MILES / HOURS / WEIGHTS

Height: **Length:** **Width:**
GVWR: 33,000 **Unladen:** 28,270LBS **Tow Capacity:**
Axle Capacity: 12,000LBS front / 21,000LBS rear
Wheelbase: 187 WB / 120 CA **Tire Size:** 11R22.5
Tread Front/Rear: **Tread Updated:**
PTO Hours: 2393
Engine Hours: 5,214 **Hours Updated:** 5/14/2020
Miles: 56,585 **Miles Updated:** 11/05/2020

Additional Specs:

60' 05 TEREX XM55-MH; 06 IH 4300 4X2 A0115326 EQUIP DESC: ENGINE TWO SPEED THROTTLE CONTROL, PLATFORM LEVELING AND TILT, ELBOW CYLINDER, LIFT CYLINDER, BOOM INTERLOCK, 35 GALLON HYDRAULIC OIL RESERVOIR, AUXILIARY LET DOWN, INSULATED ENGINE STOP/START, ELECTRICAL MINI BOX SYSTEM, 69KV CAT B OPTION TRUCK DESC: TAIL SHELF WITH 12-GAUGE TREADPLATE, ICC REAR BUMPER, LAMINATED WOOD OUTRIGGER PAD, OUTRIGGER PAD STORAGE BRACKETS, B/U ALARM, PETERSON 7-LAMP DOT LIGHTING PACKAGE, 6 PRONG TRAILER SOCKET, 50' COPPER GROUND CABLE, BRACKET FOR STORING GROUND CABLE, A/C, 50 GALLON FUEL TANK, AM/FM RADIO